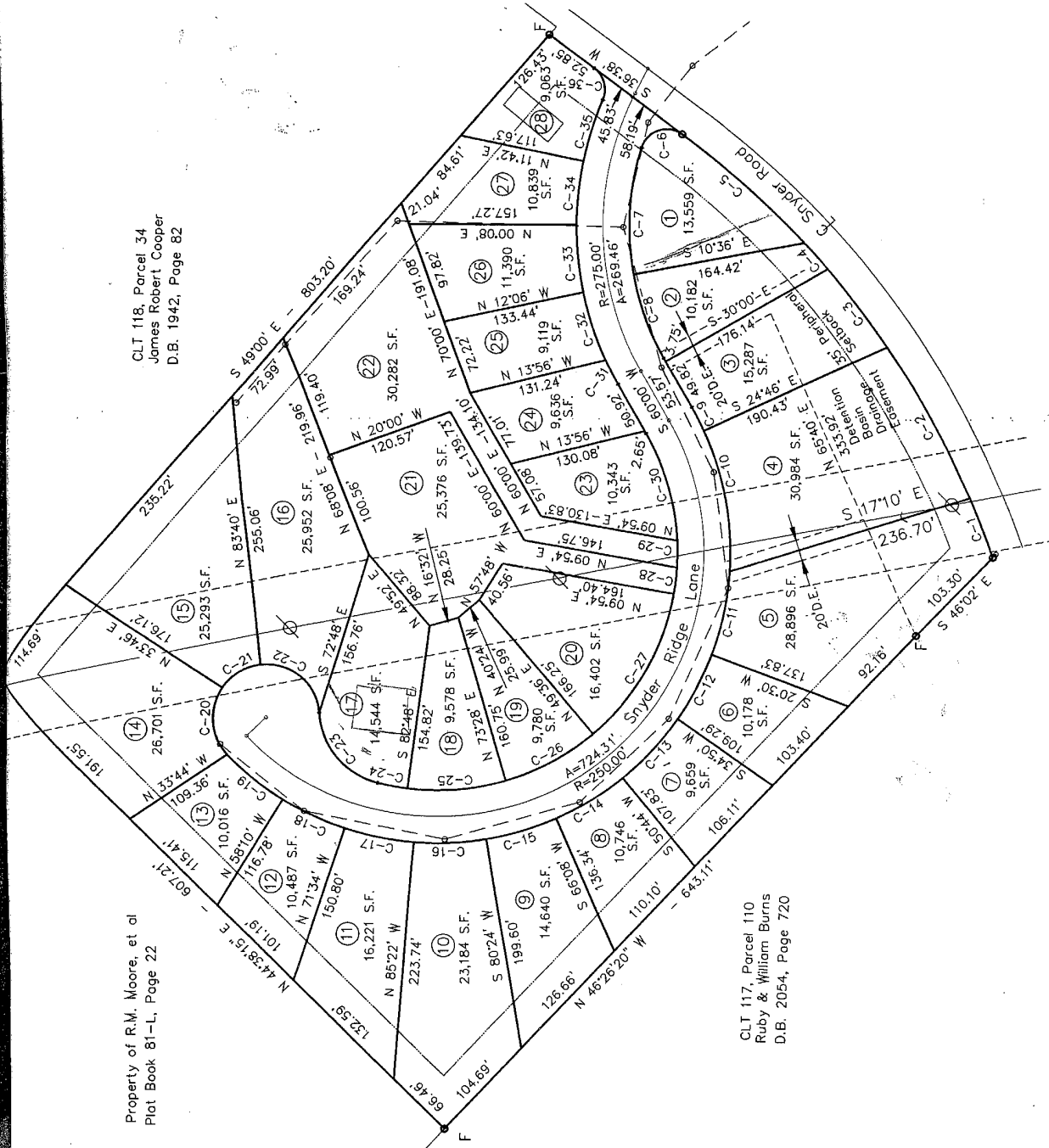


Curve No.	Radius	Arc	Chord Bearing	Chord
C-1	819.14'	59.78'	N 69°06'30" E	59.77'
C-2	819.14'	162.79'	N 61°19'30" E	162.52'
C-3	819.14'	93.14'	N 52°22'30" E	93.09'
C-4	819.14'	32.90'	N 47°58' E	32.90'
C-5	819.14'	154.87'	N 41°24' E	154.64'
C-6	25'	47.69'	N 18°09' W	40.76'
C-7	250'	121.19'	N 86°43' W	120.01'
C-8	250'	84.65'	S 69°42' W	84.24'
C-9	275'	25.12'	S 62°37' W	25.11'
C-10	275'	136.35'	S 79°26' W	134.96'
C-11	275'	80.91'	N 77°56' W	80.62'
C-12	275'	68.80'	N 62°20' W	68.62'
C-13	275'	76.31'	N 47°13' W	76.07'
C-14	275'	73.91'	N 31°34' W	73.69'
C-15	275'	68.48'	N 16°44' W	68.30'
C-16	275'	68.32'	N 02°29' W	68.14'
C-17	275'	66.24'	N 11°32' E	66.08'
C-18	275'	64.32'	N 25°08' E	64.17'
C-19	275'	68.00'	N 38°55' E	67.82'
C-20	50'	67.86'	N 84°53' E	62.77'
C-21	50'	43.55'	S 31°17' E	42.18'
C-22	50'	79.65'	S 39°18' W	71.49'
C-23	75'	92.32'	S 49°41' W	86.60'
C-24	225'	28.33'	S 10°48' W	28.31'
C-25	225'	93.20'	S 04°40' E	92.54'
C-26	225'	93.72'	S 28°28' E	93.05'
C-27	225'	155.90'	S 60°15' E	152.80'
C-28	225'	25.05'	S 83°17' E	25.04'
C-29	225'	25.37'	S 89°43' E	25.36'
C-30	225'	106.27'	N 73°32' E	105.28'
C-31	300'	25.81'	N 62°28' E	25.80'
C-32	300'	67.92'	N 71°25' E	67.77'
C-33	300'	64.05'	N 84°01' E	63.93'
C-34	300'	60.56'	S 84°05' E	60.46'
C-35	300'	60.70'	S 72°30' E	60.60'
C-36	25'	33.45'	N 74°58' E	31.01'



CLT 118, Parcel 34
James Robert Cooper
D.B. 1942, Page 82

Property of R.M. Moore, et al
Plot Book 81-L, Page 22

CLT 117, Parcel 110
Ruby & William Burns
D.B. 2054, Page 720

Drainage Systems:
Verify bond or other security has been
agency to insure completion and
systems as shown on drainage plans
Day of 19